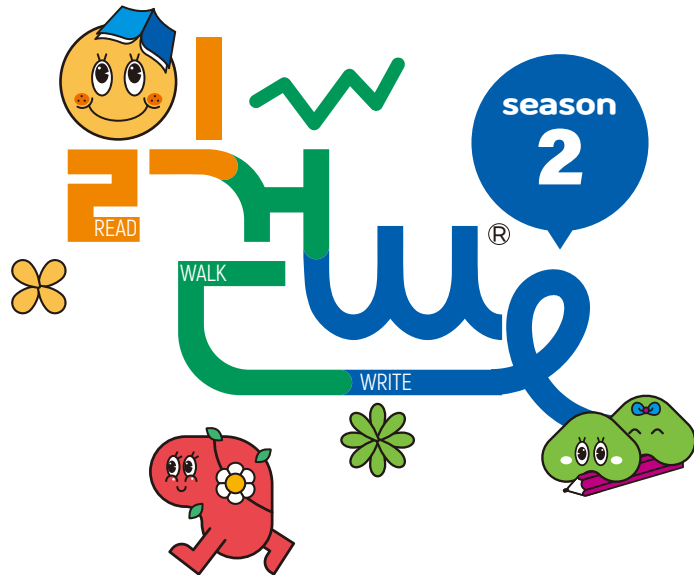


Read and joyfully explore

Walk and fully experience

Write and actively engage



read walk write

What's **읽어걷쓰** (R.W.W.)?

DEFINITION **Integrated Educational Approach Incorporating Reading, Walking, and Writing**

VISION Making Education Work for All by Connecting Real-Life Experience to Embodied Learning

OBJECTIVE

愛己愛他
애기애타

Only those who truly care for and love themselves can love others and benefit the world

Creative and Convergent Talent with Healthy Body, Emotion and Personality

●	●	●	●
High-spirited Individual	Vibrant Individual	Warm-hearted Individual	Principled Individual
A person who is bright, active, curious, and inquisitive	Eager to take action and embrace challenges	Spreading positivity and encouragement	Dedicated to seeking truth and personal growth



學思習行
학사습행

Study, Think, Learn, and Walk

Integrating Everyday Experiences into Learning

Enhancing Life through Reading, Walking, and Writing



TASK

Embracing R.W.W. as a process for generating new meaning, expanding understanding, expressing and communicating through the experience of reading and walking in real-life context

why **읽걷쓰**

+ The changing times, **urge new approaches to schools and education**

- In today's materially affluent 21st century world, do our schools serve as a genuine hub for students to explore and embrace the diverse components of a fulfilling life?
- Do we aspire to have schools where the way we learn and the subjects we learn are intimately connected, fostering pathways to a better life?



Realization of education that connects knowledge and life



ABILITY



Proficiency in reading, writing, and using a variety of texts effectively

능력

ATTITUDE



Willingness to read, walk, and write adaptively, considering various purposes, contexts, and participants

태도

TOOLS



Enactment of meaning making tools across learning, work, and life

도구

PRACTICE



Engagement in social and cultural activities as an active community member

실천

LEVERAGE



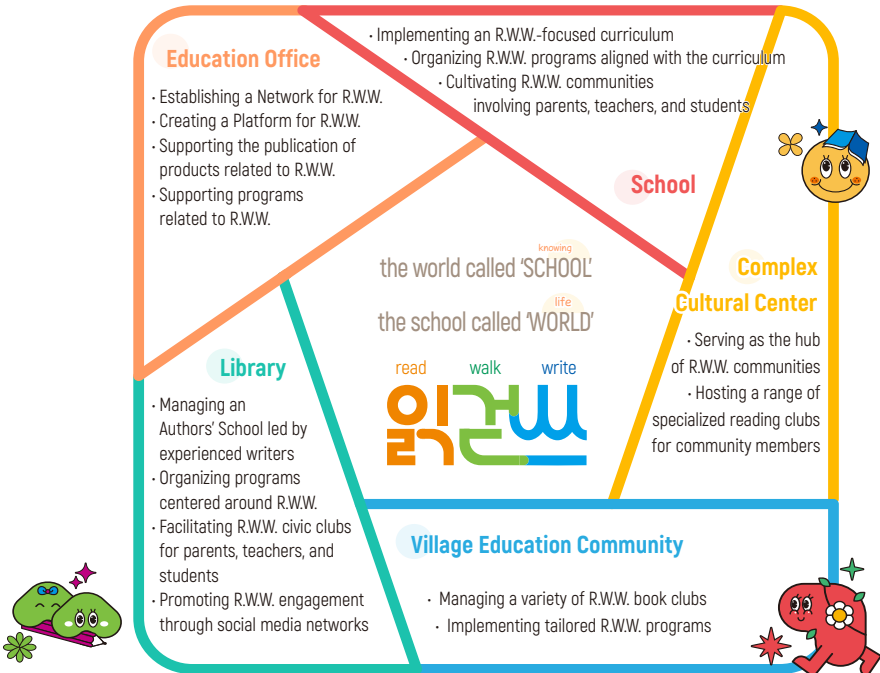
Harnessing knowledge and skills to effect positive change for social justice, a fulfilling life, and a better world

지렛대

How & What Do We Learn through R.W.W.?

+ Humanity and Healthy Future Competence

- Increasing the call for educational reform in response to the challenges posed by the climate crisis, demographic shifts, and heightened uncertainty in future societies
- Delving into introspection regarding human self-identity for the co-existence with artificial intelligence
- Fostering the growth of individuals and society by bolstering future competency to engage meaningfully with diverse knowledge and experiences both within and beyond educational institutions





Implementing Strategies

1 Education Curriculum

Competency in learning that integrates knowledge into daily life

- Recognizing R.W.W. as an integrated learning experience
- Employing R.W.W. as teaching-learning methods that unlock potential
- The power of learners to explore knowledge and understand, create, express, and communicate new meanings through convergent reading, walking, and writing in the context of life



Competency • Directions

2 Civic Culture

Incorporating learning into everyday life through fostering healthy R.W.W. habits

- Engaging in activities to cultivate healthy habits and enhance social communication skills for a fulfilling life
- Embracing R.W.W. as a lifelong learning process

3 Expanding Nationwide

Enhancing social influence by taking meaningful action to create positive change in our world

- Empowering individuals to cultivate their unique learning and health identities through R.W.W.
- Taking action on environmental, global, and social challenges with heightened awareness

read walk write



major events

◆ Collaborative Library Programs(March to December): Operation of civic clubs and civic author school

3 MARCH	4 APRIL	5 MAY	6 JUNE	7 JULY
<p>3.4.-25. Humanities Relay -Artificial Intelligence with Humanity [Hwadojin Library]</p>	<p>4.3.-24. Humanities Relay -Artificial Intelligence with Humanity [Seogu Library]</p> <p>4.17.-19 Readers' Publishing Exhibition (Incheon City Hall Subway Station)</p> <p>4.27. Appointment ceremony for the Readers' Promotion Team</p>	<p>5.9.-30 Humanities Relay -Artificial Intelligence with Humanity [Gyeyang Library]</p> <p>5.29.-6.2. Running RWW booth in The Korea Global Education Fair</p>	<p>6.4.-25. Humanities Relay -Artificial Intelligence with Humanity [Yeonsu Library]</p> <p>6.28.-29. Operating an RWW booth and delivering lectures at the Korean Educational Research Association</p>	<p>7.16.-7.23. Humanities Relay -Artificial Intelligence with Humanity [Bukgu Library]</p>
8 AUGUST	9 SEPTEMBER	10 OCTOBER	11 NOVEMBER	12 DECEMBER
<p>8.7.-8.28. Humanities Relay -Artificial Intelligence with Humanity [Jungang Library]</p> <p>Incheon Youth Humanities Discussion Forum</p>	<p>9.6.-9.27. Humanities Relay -Artificial Intelligence with Humanity [Bupyeong Library]</p> <p>9. 28. Search(=New Spirit) Writing Contest Held a public hearing (scheduled)</p>	<p>10.8.-10.29. Humanities Relay -Artificial Intelligence with Humanity [Juan Library]</p> <p>10. 9. Hangul Day event</p>	<p>11.9. Incheon Education Community and Citizens' Walking Hanmadang (Incheon Asiad Stadium)</p>	<p>RWW. an evaluation meeting</p>



읽걷쓰 플랫폼



인천광역시교육청
통합공공도서관



인천광역시교육청
통합전자도서관



Q1 Please explain the concept of R.W.W.

A R.W.W. education aims to cultivate the "power of life." Through R.W.W., individuals find joy in reading diverse texts, fully observe and experience life, and actively engage in all life's processes.

Q2 What does R.W.W. mean?

A R.W.W., which represents reading, walking, and writing, encompasses deeper meanings within each activity. Yet, these three components are not independent but intertwined, forming a unified learning experience. We have the flexibility to engage in all three interchangeably: reading, walking, and writing; writing, walking, and reading; walking, writing, and reading. **R.W.W. education seeks to instill life with purpose, encouraging individuals to ponder significant questions and dynamically explore them throughout their journey.**

Q3 What does 'walking' mean?

A In the context of R.W.W., 'walking' extends beyond physical movement. It provides a hands-on experience connecting reading and 'writing', **facilitating the integration of knowledge with real-life experiences.** Broadly, 'walking' entails actions aimed at engaging closely with real-life phenomena and issues through observing, listening, sensing, and learning. It symbolizes active societal engagement and immersive participation in one's surroundings.

Q4 How can we practice R.W.W.?

A Individuals can engage in reading, 'walking', and writing separately, but combining two or all three activities yields even greater benefits. This union of the body and mind proves to be advantageous in various contexts. Particularly, integrating reading and writing enhances learning and sharpens cognitive skills. Learning without thoughtful reflection tends to be fleeting. Therefore, to infuse our daily lives with ongoing learning, **it's beneficial to intertwine reading, walking, and writing rather than keeping them isolated.**

As the saying goes, **"Everyone has a book in their belly,"** suggesting that everyone has stories or thoughts waiting to be expressed. Therefore, it's a good idea to select a "companion book" that brings comfort during moments of frustration. Additionally, opting to use stairs instead of elevators and writing short journal entries ranging from 3 to 10 lines can contribute to a healthy body and mind.

Q5 Do you have any examples of R.W.W.?

A In the Nordic countries, books are common gifts during Christmas, and 10% of the population are authors. In Sweden, 75% of people participate in book clubs. **In Incheon, we aim for 300,000 authors and encourage all citizens to embrace reading, walking, and writing for a fulfilling life.** Together, let's transform Incheon into a city of learning.

”

Education where everyday life becomes learning

“

