

➔ **Open**

• Tuesday~Sunday(10:00~17:00)

➔ **Closed**

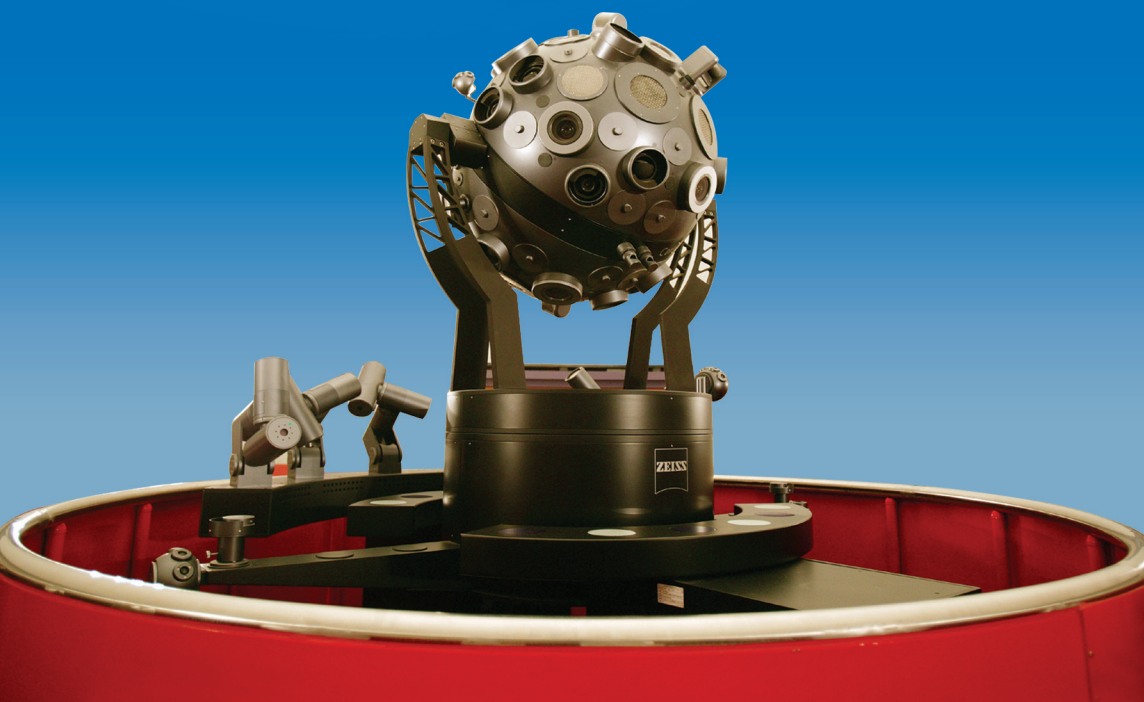
• Monday, National Holidays, and Special Holidays

➔ **Making a Reservation**

- Internet reservation is required for a group of 20 or more people(up to 250 people)
- Individuals can freely visit the museum(within the limit of 500 people)
- For more information, you can contact (032)880-0792

➔ **Home Page Address**

• <http://www.ienet.re.kr>



Incheon Student Science Museum



- Observatory & Lounge 6F
- Science Experience Hall 5F
- Future Science Hall 4F
- Basic Science Hall 3F
- Natural History Research Hall 2F
- Kumdori Hall 1F



 Incheon Education & Science Research Institute

<http://www.ienet.re.kr>

1F

Kumdori Hall

Indoor playground



Children can develop their physical strengths and enjoy interesting facilities here. (Only under 6 year-old-children can use this place)

Aquarium



People can observe Korean coastal fishes, mud flat living creatures, tropical fishes and corals.

✚ My town introduction		110—(ㄷ)	Mirror land	120—(ㄱ)	Air basketball
101—(ㄱ)	Introduction of Incheon	110—(ㄹ)	Moving Mirror	120—(ㄴ)	Hover ball
101—(ㄴ)	21c Incheon 3 Port	110—(마)	Space walks	121	Balance tester
102	Freshwater aquarium	111	Memorial Medal	122	space ship
103	Coral and tidalflat ecology tank	112—(ㄱ)	Magic bottles	123	Listen to the sounds of the forest
104	Ecology aquarium	112—(ㄴ)	Fun with smells	124—(ㄱ)	How high can you jump
105	Tropical fish aquarium	112—(ㄷ)	Fun with numbers	124—(ㄴ)	My instant reaction
106	Marine Aquarium	112—(ㄹ)	Convert your voice(Voice Modulation)	125—(ㄴ)	Magical mirror room
107	Video Aquarium	113	Bubble ferris wheel	126	Travel to the safety wheel
108	Under the sea	114	Puzzle Game	128	Glass labyrinth
109	Floor map and Exhibitions information	115	Hand print	129	How big were the dinosaurs?
✚ Amusement park		116	Mirage can	130	Non-String Harp
127	Amusement park	117	Shadow exam room		
✚ Science fun		118	Electron shadow		
110—(ㄱ)	Magic mirror	119—(ㄱ)	Secret of sloping room		
110—(ㄴ)	Combining two faces	119—(ㄴ)	Magic faucet		



MEMO

MEMO



Incheon Student Science Museum



MEMO



2F Future Science Hall

Configuration of the Earth, History of the Earth, Eco-system

Minerals and Rocks



Rock-forming minerals and various rocks by classification system are displayed

The Ocean and Land Ecosystem



Animal and plant samples and their models are displayed to help people understand the natural ecosystem.

201	Floor map and Exhibitions information	207-(L)	Birth of primitive life	211	Ecosystem Travel
202	Where are Incheon?	208-(7)	Evolutionary history of life	212	Oceanic Birds & Mammalia
✦ Configuration for an Earth		208-(L)	Fossil, evidence for evolution	✦ Land Ecosystems	
203-(7)	World of Minerals	209	Evolution of mankind	213-(7)	Mammals
203-(L)	Gemstones	✦ Biodiversity		213-(L)	Korea's creatures
204	World of rocks	210-(7)	Five Kingdom System	213-(C)	Birds
205	Geology of Korea	210-(L)	Kingdom Monera	✦ Visual aids for learning	
206-(7)	Mystery of fluorescent minerals	210-(C)	Kingdom Protista	214	Visual aids for learning
206-(L)	Miraculous magnetic irons	210-(2)	Kingdom Fungi	215	Multimedia Library
✦ Earth and history of life		210-(3)	Kingdom Plantae		
207-(7)	Birth of the Earth	210-(4)	Kingdom Animalia		

3F

Basic Science Hall

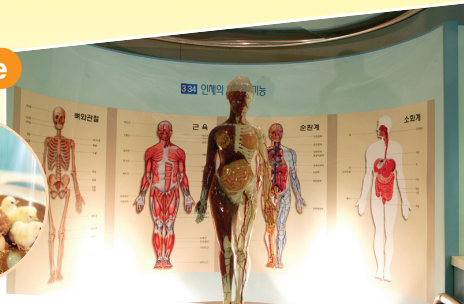
Energy, Force, Electricity, Structure of the Human Body



• Conservation of Mechanical Energy

Various facilities show how potential energy converts to kinetic energy

• Mysteries of Life



The structure of human body and its function are displayed and explained

Basic sciences	317-(7)	Photoelasticity and stress patterns	329-(2)	Crookes cathode ray tube(Crookes tube)
301 Floor map and Exhibits information Action and reaction	317-(4)	Four dimensional wall	330-(7)	Electric swing
302 Acceleration	318	Sound drawing	330-(4)	Electromagnet UFO
303 Why does it fall slowly?	319	Mirror art	331-(7)	Electrostatic pendulum
304-(7) Spinning eggs	320	light scattering	331-(4)	Lightning and fire
304-(4) Conservation of mechanical energy	321-(7)	Afterimage	331-(4)	Popping beans
305 Gyroscope	321-(4)	Magic glass of activity	332	Currents and magnetic fields
306 Air table	322-(7)	Making a hologram	333-(7)	How tall am I
307 X-ray experiments equipment	322-(4)	White a hologram	333-(4)	Voice transformation and playback
308-(7) X-ray experiments	322-(4)	Three-dimensional moving images	333-(4)	Comparing the brightness of light
308-(4) Diverse flames	322-(2)	Transparent hologram	333-(2)	Invaders Game
309 Hand boiler	323	Moiré patterns	334	Structure and function of the human body
310 Temperature and movement of gas molecules	324	Primary colors of light	335-(7)	Transmission process of sense
311 Periodicity of the elements	325-(7)	Hidden message	335-(4)	Eye structure and function
312 Radiation measurement	325-(4)	Seeing the dark	336	Mystery of Life
313 Chemical Battery	326-(7)	Laser show	337	Foucault's pendulum
314-(7) Fuel cell	326-(4)	Modulation of the laser	338	Air bubbles travel
315 Mirror room	327	Strobe fountain	339	Plate tectonic and continental drift
316-(7) Fun with pulley	328	Vibrating bugs	340	Principle of earthquake measurement
316-(4) How a piano works	329-(7)	Windmill	341-(7)	Creating sand dunes
316-(4) Ams wrestling with wheel and axle	329-(4)	Thompson's discovery of the electron	341-(4)	Whirlwind
	329-(4)	Curved light		



Things to Keep in Mind

1. Plan ahead and take your time when observing the exhibits.
2. Keep quiet and observe the exhibits in the orderly manner.
3. First, read the explanation of the exhibits and facilities carefully and then observe and experience them.
4. Try to enjoy the special programs like the Weekend Science Experience Plaza and Planetarium.
5. Adults are recommended to plan ahead, thinking of their children's age and interests before visiting the museum.
6. Try to get help from the guides who are positioned at each floor's desk.
7. Don't run and play in the museum, damaging any exhibits or scientific facilities.
8. Visitors are not allowed to bring any food or drink in the museum.

(You can have your meal or snack on the 6th floor, but you can't leave any garbage you make.



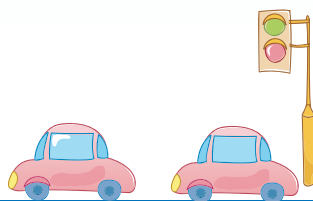


Ways to Come to Incheon Student Science Museum



You can contact 032-880-0791 to get information of ways to come to Incheon Student Science Museum

- A** Seoul Outskirts Highway → No-or-ji Inter-Change → Incheon International Airport Highway → Airport New Town Inter-Change → Airport New Town → Passing the underpath of the Highway → Incheon Student Science Museum
- B** North Incheon Inter-Change → Incheon International Airport Highway → Airport New Town Inter-Change → Airport New Town → Passing the underpath of the Highway → Incheon Student Science Museum
- C** Waerl-mi Harbor → Goo-eup port → Way to Woon-nam-dong → Way to Woon-ser-dong → Kum-ho Apartment Complex → Incheon Student Science Museum
- D** Incheon Bridge → Airport New Town Inter-Change → Airport New Town → Passing the underpath of the Highway → Incheon Student Science Museum



4F Future Science Hall

Bio-Tech, Information & Communications, Aerospace, New Synthetic Compositions

Tomography of Human Body



The development of Bio-tech, Information & Communications, and Robotics are displayed.

Green Growth and Various development System



Various development principles for Green Growth are explained to raise the attention for energy-saving.

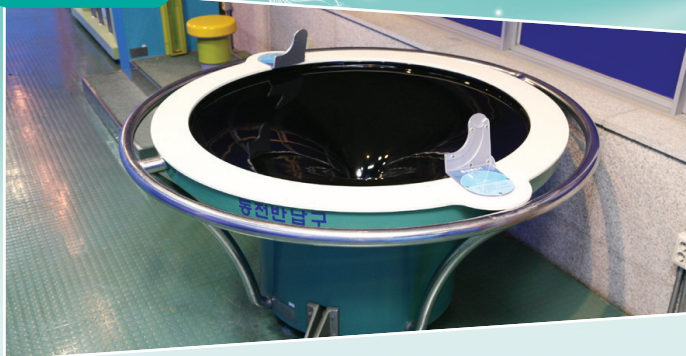
401	Floor map and Exhibitions information	411	Genome Project	423	New synthetic compositions / Energy
402	Precision Machines / Environment	412	Photosynthesis	424	Three-dimensional sculpture
403	Mini Robots Dancing	413	Information and Communication	425	Various new synthetic compositions
404	Robots	414	Past and Present, Future of IT	426	Biosensor
405	Micro World	415	Our Body tomography	427	Human sense and sensors
406	Face transformation	416	Aerospace	428	MHD ship
407	Infrared & visible Ray	417	Planetary weight scale	429	Tidal & Wave Power Generation
408	Lab for science club activities	418	Korean Satellite	430	Hydroelectric Power Generation
409	Three dimensional imaging system	419	Birth of the universe	431	Nuclear & Thermal Power Generation
410	Biotechnology	420	21st Century space exploration	432	Solar energy Experience
411	Artificial organs	421	Movement of the solar system	433	Wind power generation
412	Cell observation	422	Plasma flat (Flat panel plasma)	434	Future maritime city
413	DNA structure	423	Climbing arc (Jacob's ladder)	435	Chain reaction
414	Transcription and translation	424	Electric plasma	436	Magnetic levitation train
415	Actual situations of biotechnology	425	Black hole		

5F

Science Experience Hall

Coin Race, Total Reflection, Free Fall in Vacuum

Coin Race



Celestial movement is explained through the coin's circular movement.

Spinning Water basin



Phenomenon by the earth's Rotation is explained.



501		508	Three dimensional image	515	Total reflection
502	Sound resonance	509	Rotational moment of inertia	516	Pythagoras
503	Rotational Doppler effect	510	magic wand	517	Magnetic Drum
504	Strange wheel	511	Bird in the cage	518	Magnetic pendulum
505	Coin race	512	Giant lens	519	Revolve disk
506	Water scale	513	Surface tension	520	Free fall in vacuum
507	Moire Patterns	514	Coriolis affect		

1F

Botanical Garden

Main Building



Botanical Garden



37 species of temperate climate zone plants, 53 species of the subtropical zone plants, 10 species of aquatic plants, and 36 species of desert plants are displayed(available from Tuesdays to Fridays)

Exploring the Botanical Garden

- Learning the whole structure of the botanical garden
- Learning plant species, reading the explanations posted on the pillars.
- Learning plants from various climate zones and areas, and compare the characteristics of them.



Outdoor Exhibition

Traditional scientific facilities, Learning Rocks Section

• Traditional Science Learning Section



This is where people can find out our ancestors' wisdom, and their traditional scientific skills and various astronomical observation facilities

• Learning Rocks Section



This is where 7 different minerals and 86 rocks that form the earth's surface

6F

Observatory & Lounge

• Photo of Lounge



• Introduction to the Observatory

- ★ Running Hours: 10:00~17:00
- ★ Contents:
 - You can see the landscape and take a rest here as well.
 - During the Weekend Science Experience Plaza, Observatory can be the place for a public demonstration.
 - You can have your meal or some snack that you bring. (You should take all the waste with you.)

• Photo of the Weekend Science Experience Plaza



• Introduction to the Weekend Science Experience Plaza

- ★ Participating School and Period: selective teams are picked out of the school teams which submitted applications to us. These teams will do the scientific performance for the visitors every Sunday and every second Saturday (60 times this year: 2010.04.01~2010.12.31)
- ★ Running time: 3 times a day (11:30, 13:00, 14:30)
- ★ Running place: a laboratory on the 4th floor of the Science center
- ★ Program Contents
 - Themes which can interest students scientifically with the format of a scientific show are performed.
 - It'll take about 20 ~ 30 minutes for each theme.

2F

Planetarium

What is Planetarium?

The big domed screen, which is also called planetarium, can reproduce the various celestial bodies and astronomical phenomena. When you look at this, you will feel like observing the heavenly bodies with the guide of an expert. The screen's diameter is 16m and up to 195 people can enjoy the view at a time.

Optical Planetarium

It's a machine which looks like a big ball at the center. It's a product from a German company, Karl Zeiss. Using optical fiber, this machine can show the clearest image. It can project about 9,000 observable fixed stars in the universe, solar system and its movement, etc.

Digital Planetarium

Each of 8 projectors installed on the wall reflects divided scenes on the domed screen. These projectors are products from a Japanese company, Goto. They are placed in the Planetarium and operated with the optical planetarium. The combined beams from the 8 projectors show the lively three-dimensional scenes.



Introduction to Planetarium Show

1. General Show

- ★ 2 shows a day(11:00, 14:00)
 - Students who are in the scientific research class are first admitted to watch Planetarium.
 - Ordinary people or groups can watch Planetarium only if there are remaining seats.
- ★ If there are many groups of people, there can be a special show at 13:00.

2. Special Show

- ★ There's a special show for the students who are in the celestial observation class.
- ★ There's a special show for school celestial club members and teachers.
- ★ For more information, contact (032)880-0798

◎ Weekday Program

Month	12	1	2	3	4	5	6	7	8	9	10	11
Program	Explorer	Secrets of the Sun	Universe	Cassini	Explorer	Secrets of the Sun	Universe	Cassini	Explorer	Secrets of the Sun	Universe	Cassini
Stars	Winter Stars			Spring Stars			Summer Stars			Fall Stars		

◎ Weekend Program

Month	12	1	2	3	4	5	6	7	8	9	10	11
Program	Seven Wonders	Ocean in space	Seven Wonders	Ocean in space	Seven Wonders	Ocean in space	Seven Wonders	Ocean in space	Seven Wonders	Ocean in space	Seven Wonders	Ocean in space
Stars	Winter Stars			Spring Stars			Summer Stars			Fall Stars		